

GoogleEarth images showing location of Hazelwood Power Station & the coal mine the subject of the proceedings in the *Australian Conservation Foundation v Minister for Planning* (2004) LGERA 100; [2004] VCAT 2029



Figure 1: GoogleEarth image showing the location of the Latrobe Valley, 100km east of Melbourne, Victoria, in which the Hazelwood Power Station is located (Figures 2-4).

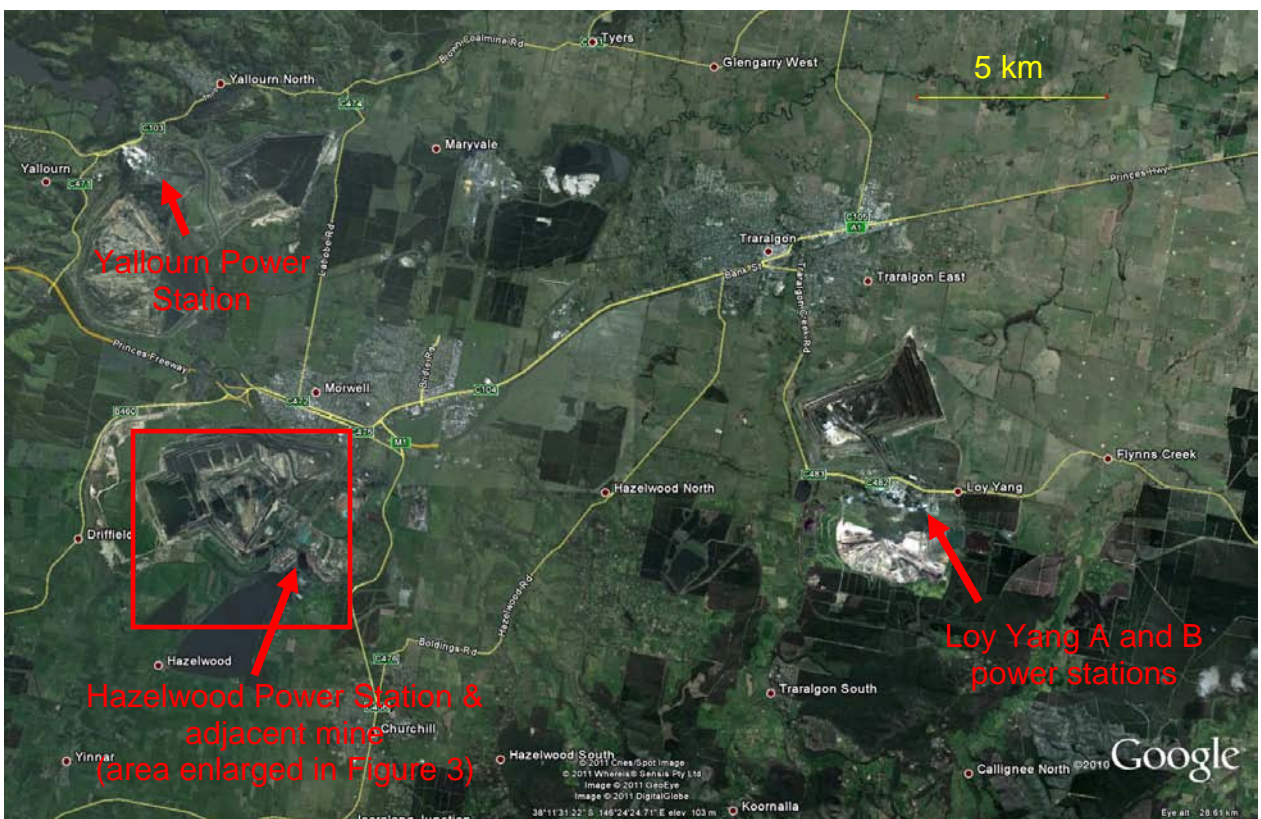


Figure 2: Location of Hazelwood Power Station and its adjacent mine (enlarged in Figure 3) and location of the nearby Yallourn Power Station & Loy Yang A and B power stations.



Figure 3: GoogleEarth image showing Hazelwood Power Station and the coal mine that supplies it together with adjacent lakes for cooling water.



Figure 4: GoogleEarth image showing Hazelwood Power Station.



Figure 5: Picture of Hazelwood Power Station, Victoria. Photo by nipper30 from GoogleEarth.