

703500 000000

704000 000000

704500 000000

705000 000000

6768500 000000

6768000 000000

6767500 000000

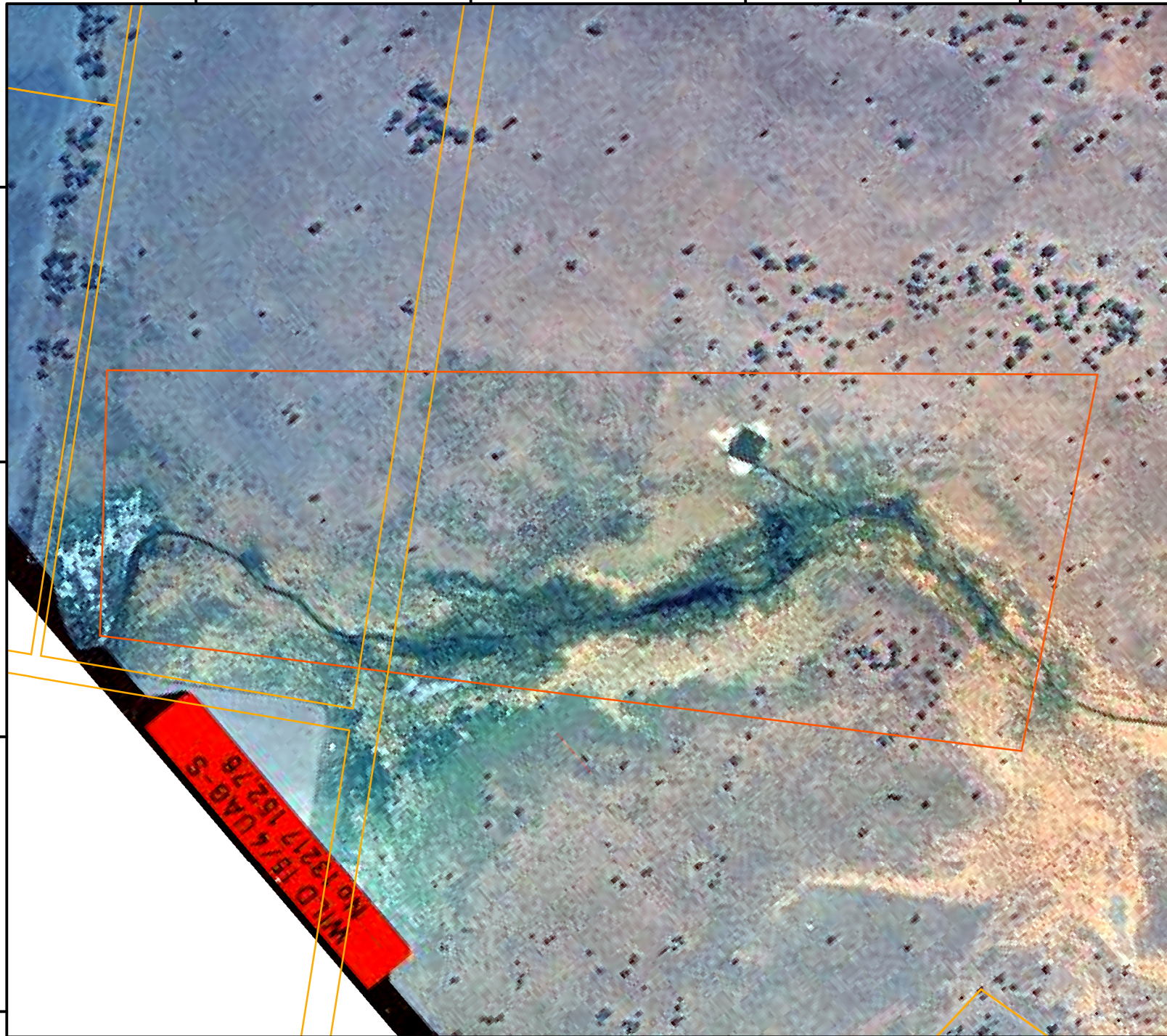
6767000 000000

6768500 000000

6768000 000000

6767500 000000

6767000 000000



703500 000000



704000 000000

704500 000000

705000 000000

Windella component
Gwydir Ramsar Wetlands
with
Aerial photography
1:25000
17th March 2002

Legend

-  Ramsar boundary
-  Cadastral boundaries



Projection: Transverse Mercator Zone 55
Spheroid: Australian
Datum: GDA 94

Scale 1:10,000

Source: The Ramsar boundaries are from the Environment Australia Directory of Important Wetlands in Australia.

The Cadastral Boundaries are from Australia - CadLite (Cadastré for all Australia, Digital Cadastral Database DCDB) All State and Territory custodians of cadastral data

Caveat: The information presented in this map has been provided by a range of groups and agencies. While every effort has been made to ensure accuracy and completeness, no guarantee is given, nor responsibility taken by the Commonwealth for errors or omissions, and the Commonwealth does not accept responsibility in respect of any information or advice given in relation to, or as a consequence of, anything contained herein. The map has been collated from a range of sources, with data at various resolutions. Data used are assumed to be correct as received from the data suppliers.

Produced by: Matt Brooks
ERIN, Dept. of Environment & Heritage,
Commonwealth of Australia
Canberra September 2003



Australian Government
Department of the Environment and Heritage

COPYRIGHT
Commonwealth of Australia, 2003