

THREE N.S.W. MINISTERS AT PLANT OPENING

The N.S.W. Minister for Decentralisation and Development, Mr. J. B. Fuller, M.L.C., officially opened the new \$300,000 Hasell Impregnation Pty. Ltd., timber treatment plant at Armidale this morning.

Also taking part in the official ceremony were the State member for Armidale, Mr. Davis Hughes, M.L.A., Minister for Public Works.

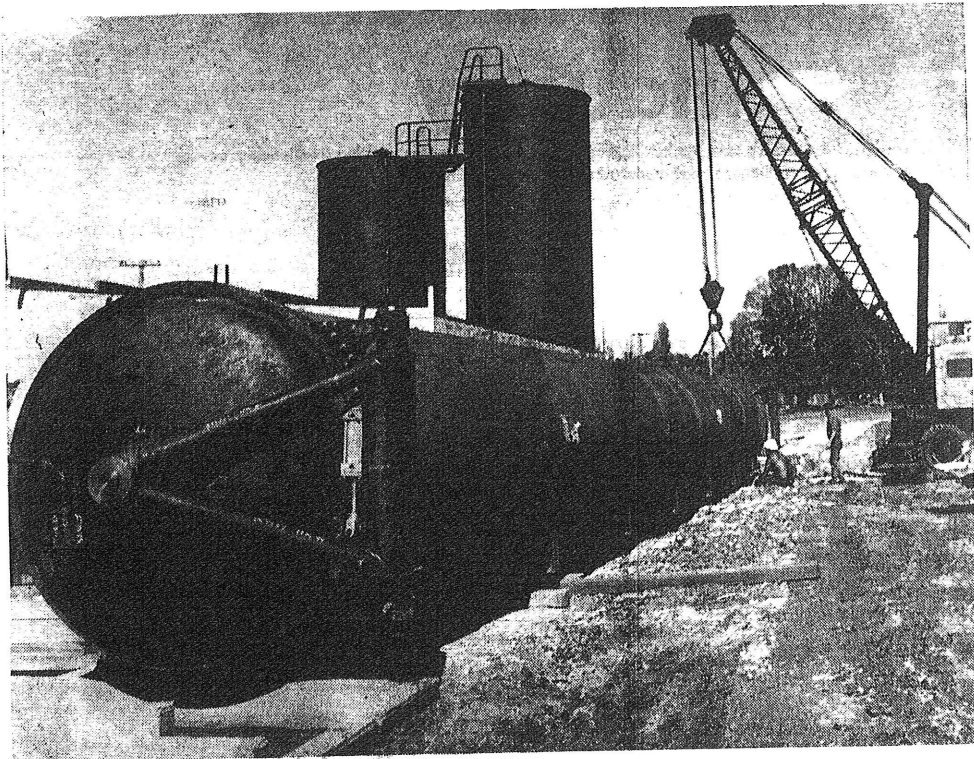
At the conclusion of official speeches, Mr. Fuller unveiled a plaque and declared the 11-acre plant open.

Other leading guests included the N.S.W. Minister for Local Government and Highways, Mr. P. H. Morton, M.L.A., Alderman L. Piddington, the chairman of the New England County Council, Alderman K. Jones, and the Vice-Chancellor of the New England University, Professor Z. Cowen.

Guests were then taken on conducted tours of the plant and entertained at a barbecue luncheon at the site. Guests included executives of Civil and Civic Pty. Ltd., project managers, and others associated with the venture, forestry and railway officials and representatives of Press, television and radio.

The official ceremony commenced at 11.15 a.m. when the chairman of Hasell Impregnation Pty. Ltd., Mr. W. D. McPhee, welcomed guests and traced briefly the history of the project.

The 75 ft. long impregnation cylinder in which poles are treated under pressure, with creosote at a temperature exceeding 200 deg. F.

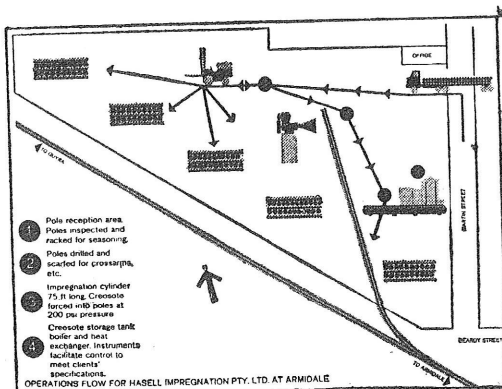


Thank you, ARMIDALE it's nice to be here

We have invested some \$300,000 in our new plant. From here we will supply, to all parts of the State, Transmission Poles for Electricity Supply and Telecommunications, Farm Fencing Timbers and Farm Building Timbers. What benefits are there to Armidale? The most important is local employment—altogether some 25 people will be engaged in cutting and processing timber. In addition there will be a demand for power, water and all the essential services that go with the operation of industry.

How does Hasell Impregnation benefit? Through the co-operation and encouragement of the City Council we have acquired a first class site which filled four prime requisites. From this site timber is readily accessible; it has all city services, it is ideally suited for timber seasoning and is adjacent to the main railway line. We are going to be here for a long, long time. As our industry grows, so, we hope, will our share of Armidale's growth. Thank you, once again, Armidale— it's a pleasure to be here.

Some facts about our NEW plant



- This plant will treat round timbers with creosote, using the vacuum pressure method.
- It will produce Transmission Poles for Electricity Supply and Telecommunications, Farm Fencing Timbers and Farm Building Timbers, all of guaranteed durability.
- The plant capacity, on a one shift basis, is 3,250,000 super feet hoppus per annum. This is equivalent to 16,000 power line poles which in turn would make-up 400 rail truck loads.
- The impregnation cylinder is 75 feet long, with an internal diameter of 6 feet. Creosote, supplied by rail from Union Carbide at Rhodes Sydney is stored in tanks with a total capacity of 22,000 galls. The creosote is circulated in the pressure cylinder at 200 psi and at a temperature of over 200° F.
- Timber will be drawn generally from the Gibraltar Range, Clouds Creek, Styx River and Nowendoc Areas.
- The plant covers over 11 acres, has its own rail siding, and consists of pole reception, and inspection area, seasoning racks, pre-fabrication mill, pressure cylinder, ancillary pump house and storage tanks, post-treatment drying racks and despatch facilities for rail and road transport. There will be a work force of 10 at the plant and 15 bushworkers.

HASELL IMPREGNATION PTY. LTD.

PLANT: MARTIN STREET, ARMIDALE. HEAD OFFICE: 251 GEORGE ST., SYDNEY.