

Historic photographs of timber treatment works at Martin Street, Armidale

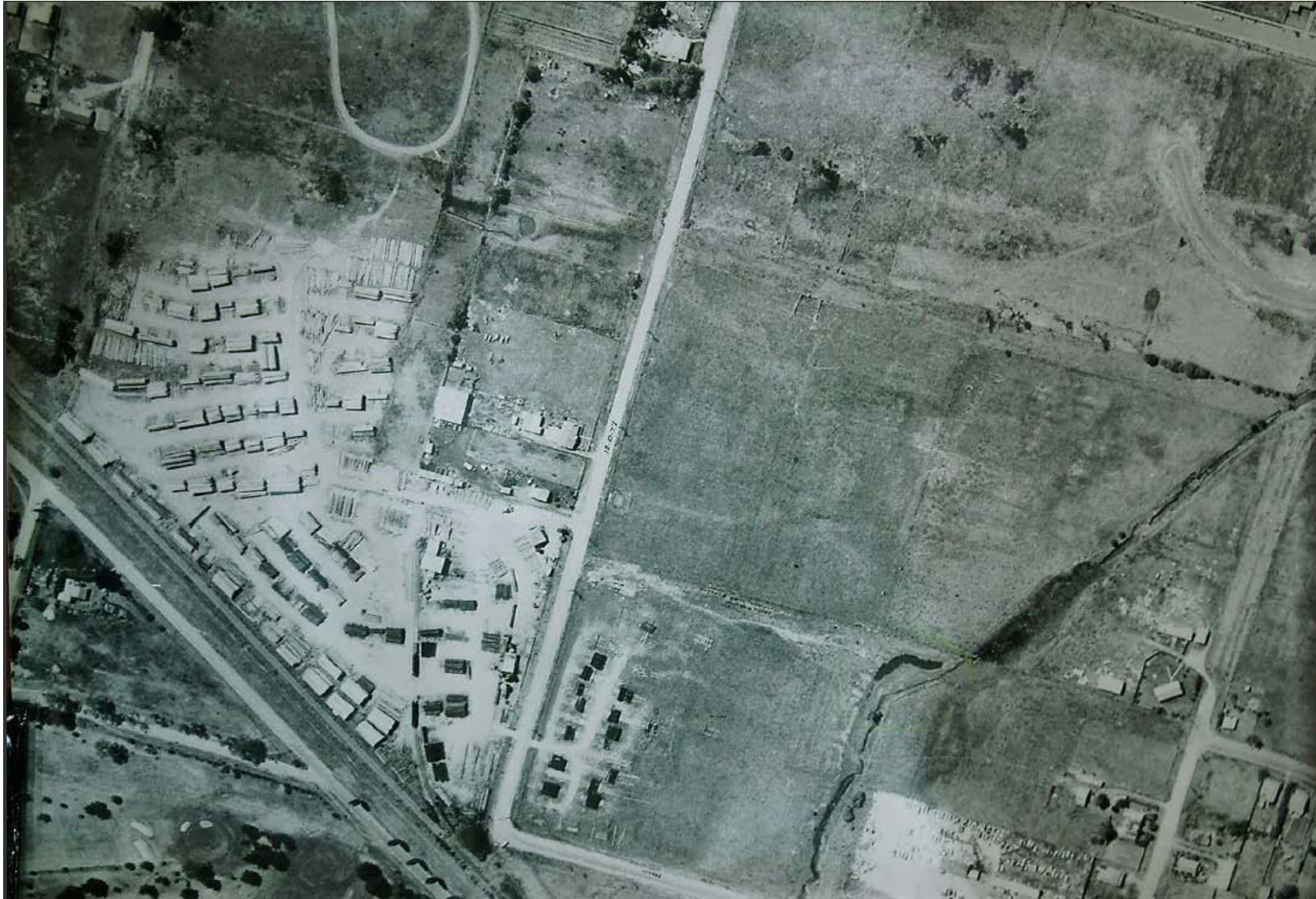
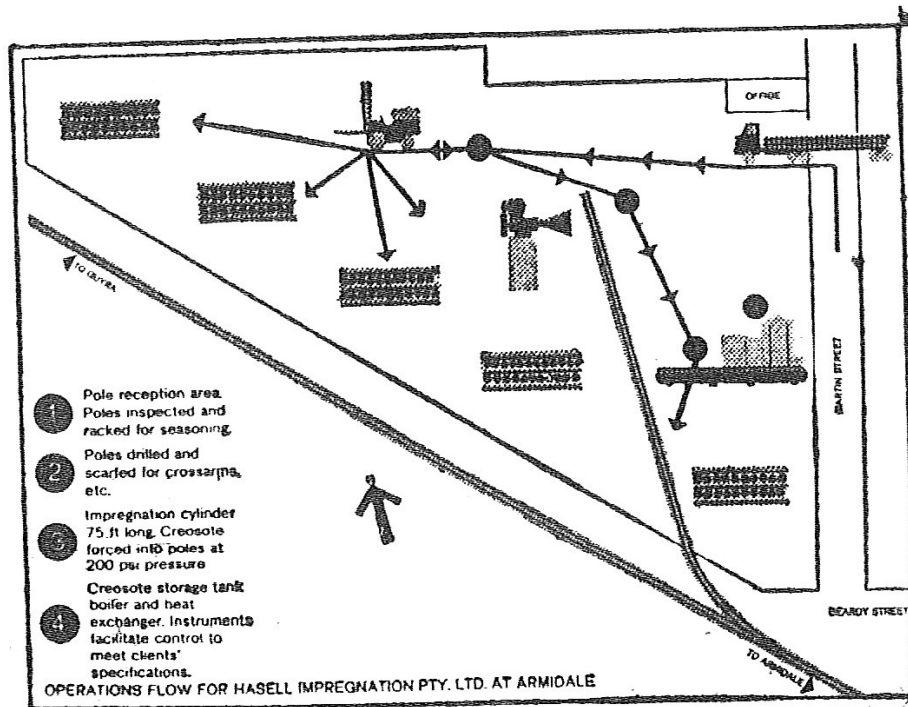


Figure 1: Aerial photograph of timber treatment plant and yard at Martin Street, Armidale ca 1976. Source: Armidale City Council

Some facts about our *NEW* plant



- This plant will treat round timbers with creosote, using the vacuum pressure method.
- It will produce Transmission Poles for Electricity Supply and Telecommunications, Farm Fencing Timbers and Farm Building Timbers, all of guaranteed durability.
- The plant capacity, on a one shift basis, is 3,250,000 super feet hoppus per annum. This is equivalent to 16,000 power line poles which in turn would make-up 400 rail truck loads.
- The impregnation cylinder is 75 feet long, with an internal diameter of 6 feet. Creosote, supplied by rail from Union Carbide at Rhodes Sydney is stored in tanks with a total capacity of 22,000 galls. The creosote is circulated in the pressure cylinder at 200 psi and at a temperature of over 200° F.
- Timber will be drawn generally from the Gibraltar Range, Clouds Creek, Styx River and Nowendoc Areas.
- The plant covers over 11 acres, has its own rail siding, and consists of pole reception, and inspection area, seasoning racks, pre-fabrication mill, pressure cylinder, ancillary pump house and storage tanks, post-treatment drying racks and despatch facilities for rail and road transport. There will be a work force of 10 at the plant and 15 bushworkers.

HASELL IMPREGNATION PTY. LTD.

PLANT: MARTIN STREET, ARMIDALE. HEAD OFFICE: 251 GEORGE ST., SYDNEY.

Figure 2: Advertisement for the newly opened timber treatment plant with map of plant layout in The Armidale Express, 21 June 1968, p 13.



Figure 3: Timber treatment works at Martin Street, Armidale ca 1968. Note that part of the 75 foot cylinder for timber impregnation shown in Figure 5 is visible on the right of this photograph. Source: Armidale City Council file



Figure 4: Storage tanks at timber treatment works at Martin Street, Armidale ca 1968

Source: Armidale City Council

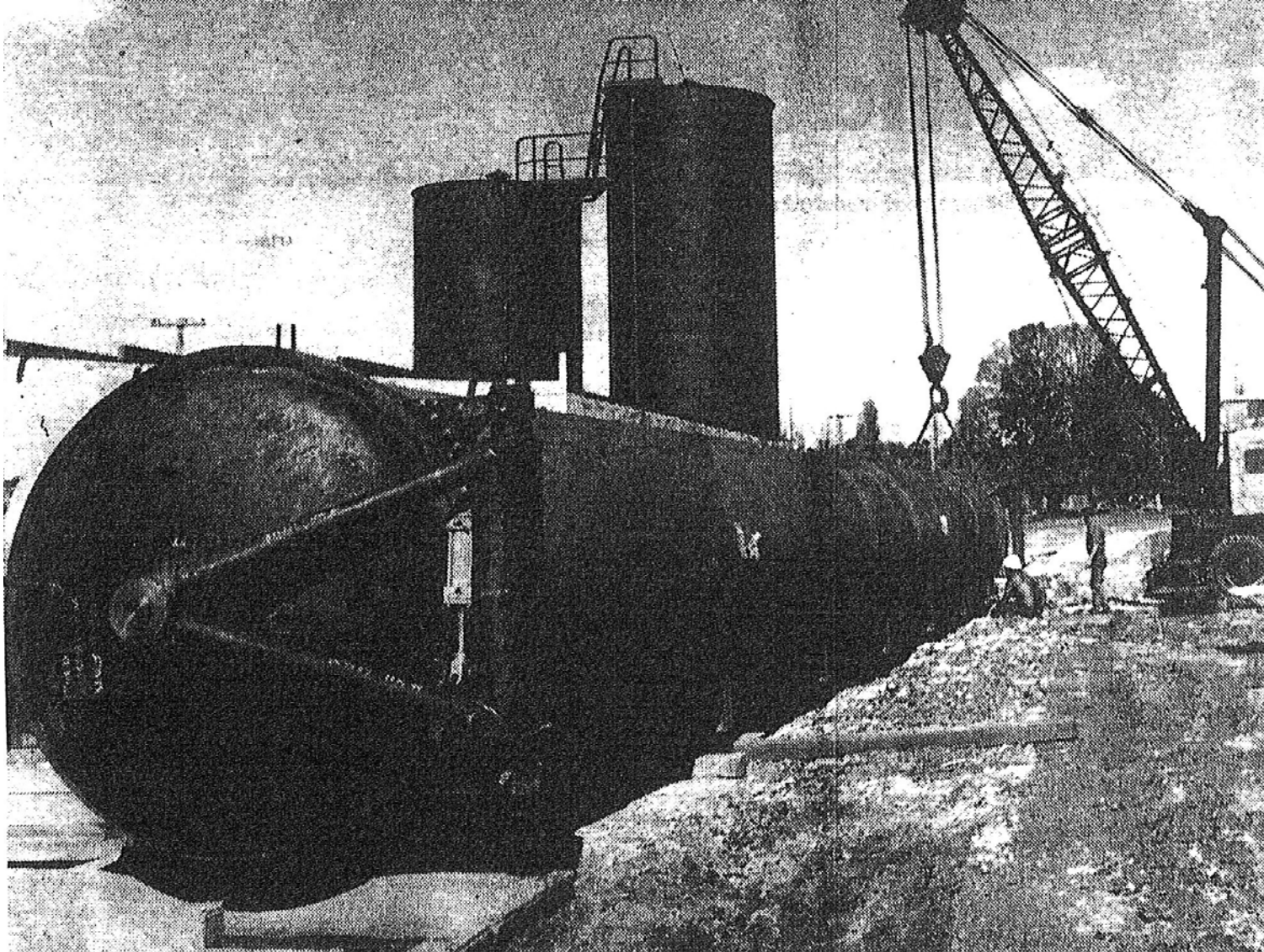


Figure 4: The 75 foot timber impregnation cylinder at the timber treatment works at Martin Street, Armidale 1968. Note storage tanks in background are the tanks shown in Figures 3 and 4. Source: The Armidale Express, 21 June 1968, p 13.



Figure 5: Creek near Martin Street, Armidale, being pumped dry of contaminants that escaped from the timber treatment works. This creek is visible in the bottom right of the aerial photograph in Figure 1. It flows north east to join Dumaresq Creek that flows through Armidale. Stacked logs from the timber treatment works are visible in the top right of this photograph. Source: Armidale City Council file from photograph published in The Armidale Express, 15 December 1976.