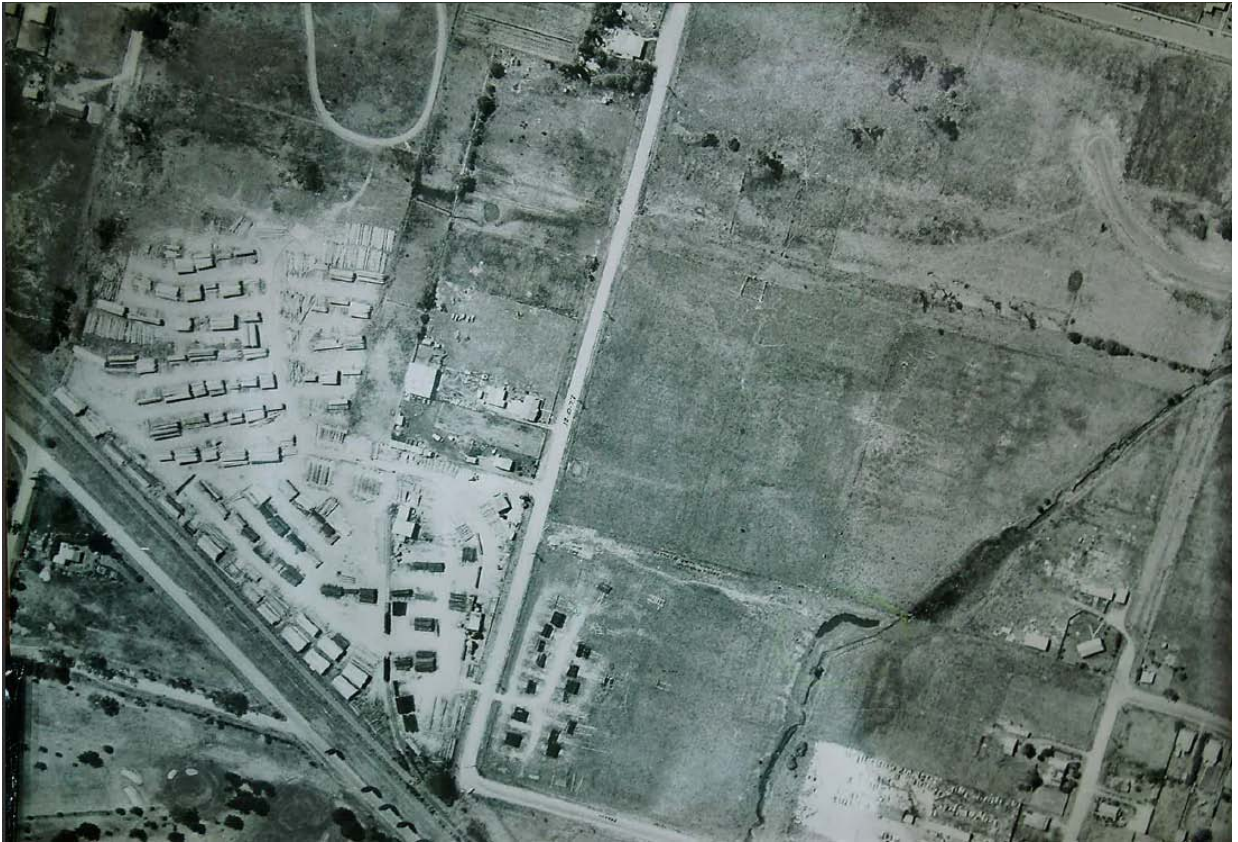


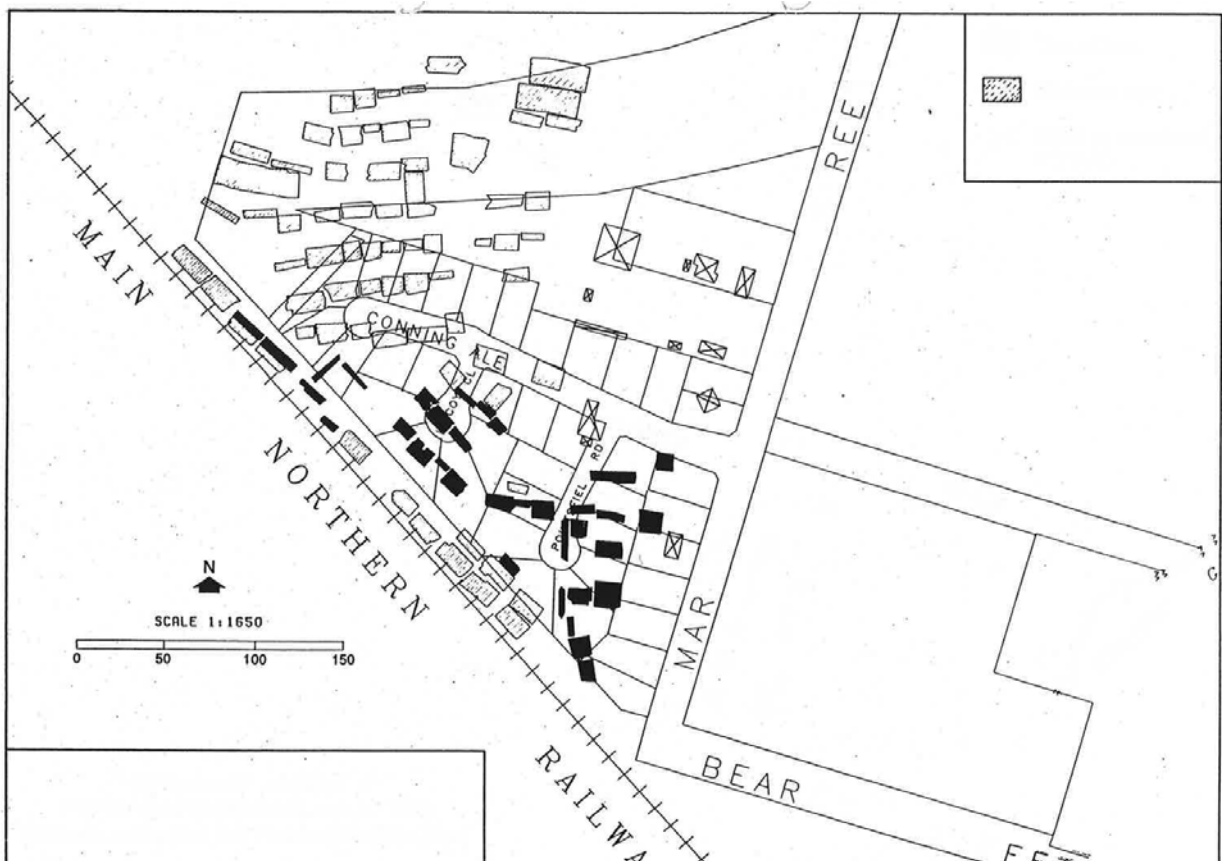
**ALEC FINLAYSON PTY LTD –v– ARMIDALE CITY COUNCIL**  
**Historic aerial photograph of timber yard compared to current residential subdivision on land**



**Aerial photograph of timber treatment plant and yard at Martin Street, Armidale ca 1976 (Source: Armidale City Council)**



**GoogleEarth image (from 2012) showing area contaminated by timber treatment yard**



**Approximate location of timber treatment stacks ca 1976 overlaid on residential subdivision layout (ca 1993). Source: NSW EPA 1993**