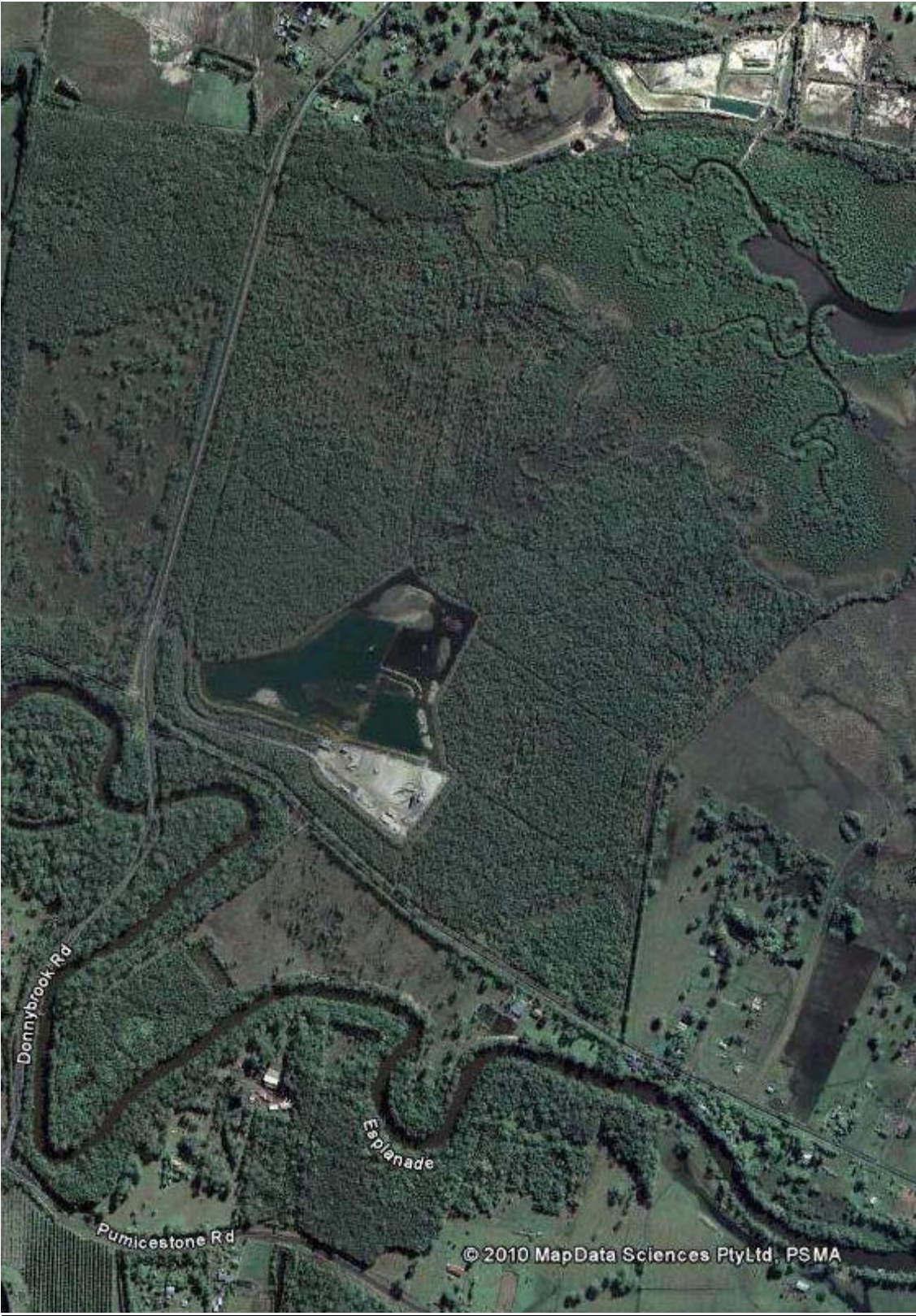


GoogleEarth image of Donnybrook sand mine in operation 17 June 2009

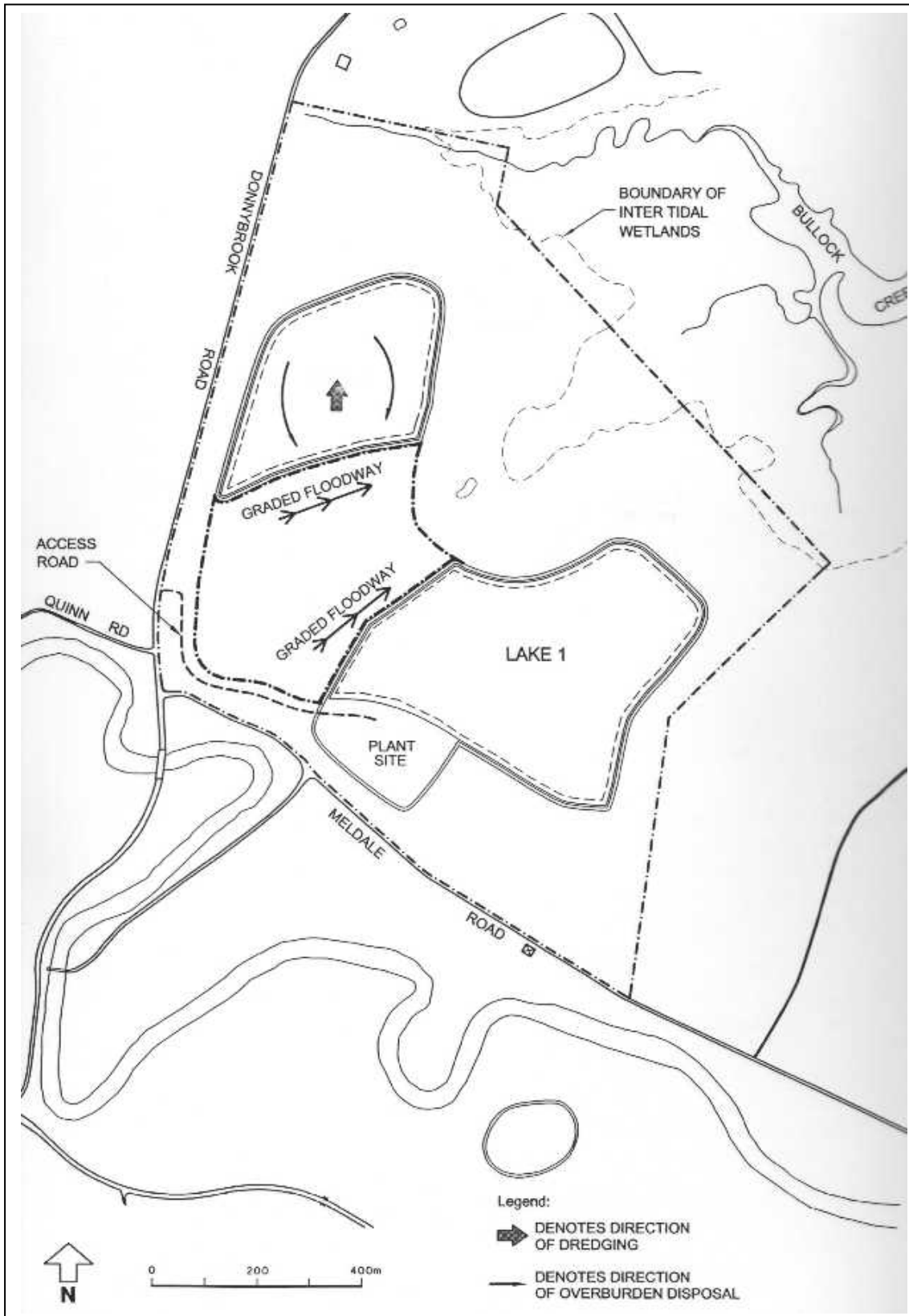


Pre-development aerial photograph of Donnybrook sand mine and adjacent wetland area (ca 2000)¹



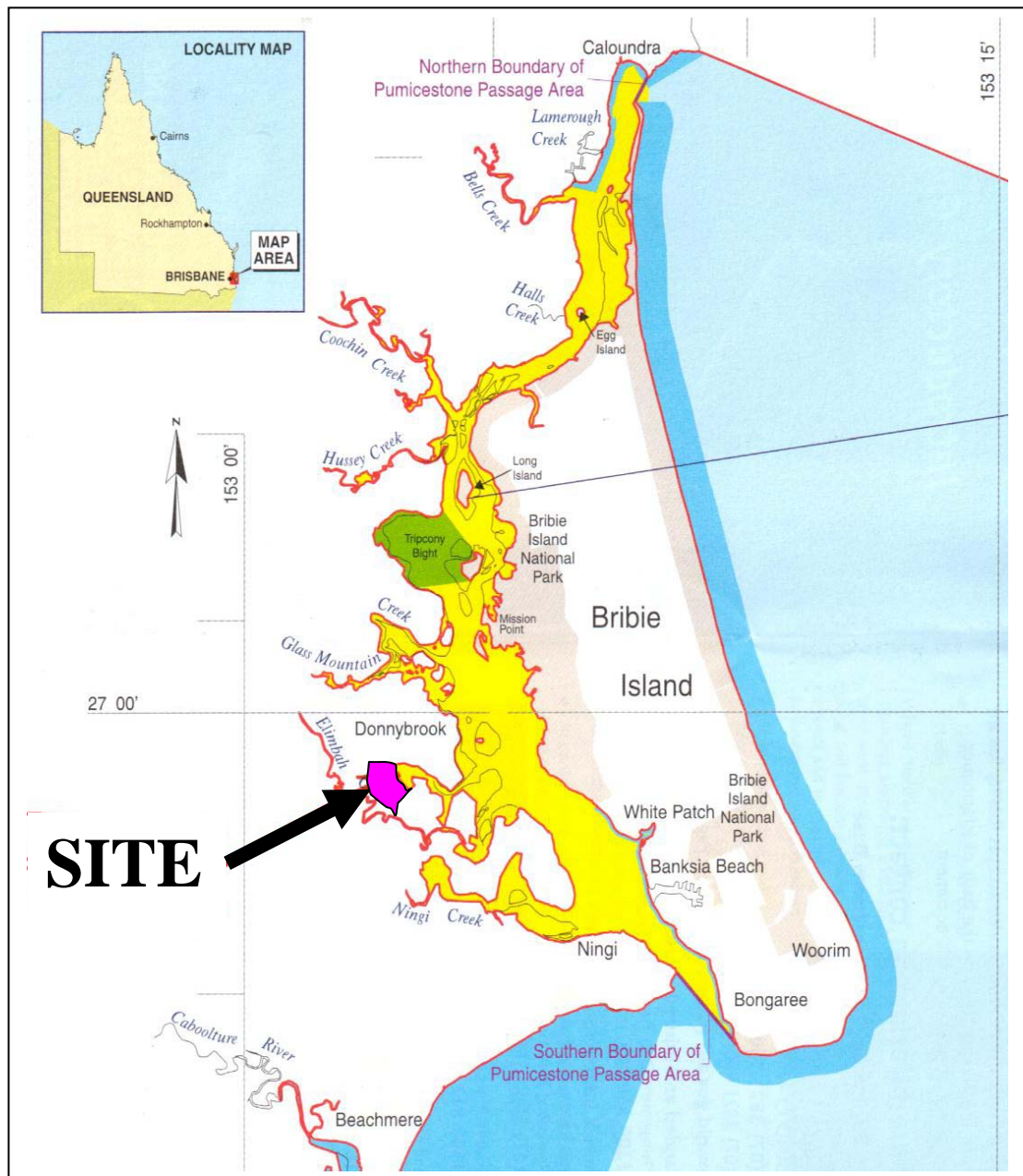
¹ Brown & Root, *Proposed Extractive Industry Operations at Donnybrook – Acid Sulphate Soil Management Plan* (unpublished report, 6 September 2000), Figure 2.5. Note: both creeks shown, Bullock Creek and Elimbah Creek, are part of the Moreton Bay Ramsar Wetland.

Map of Donnybrook sand mine showing limit of extraction and floodway²



² Brown & Root, n 4, Figure 3.6.

**Location map of the Donnybrook sand mine adjacent to the
Moreton Bay Marine Park and Ramsar Wetland³**



³ Queensland Parks and Wildlife Service, *Moreton Bay Marine Park - Introductory Guide* (QPWS, Brisbane, August 1998). The red line on the map indicates the high water mark, which forms the boundary of the marine park and Ramsar wetland.